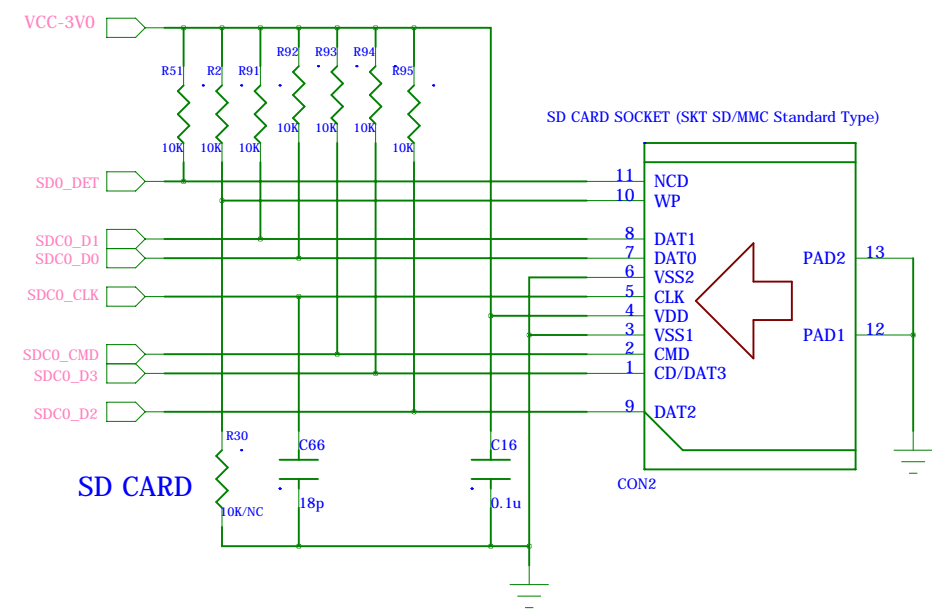


TITLE: SINA31SV1.3 BOTTOM Board

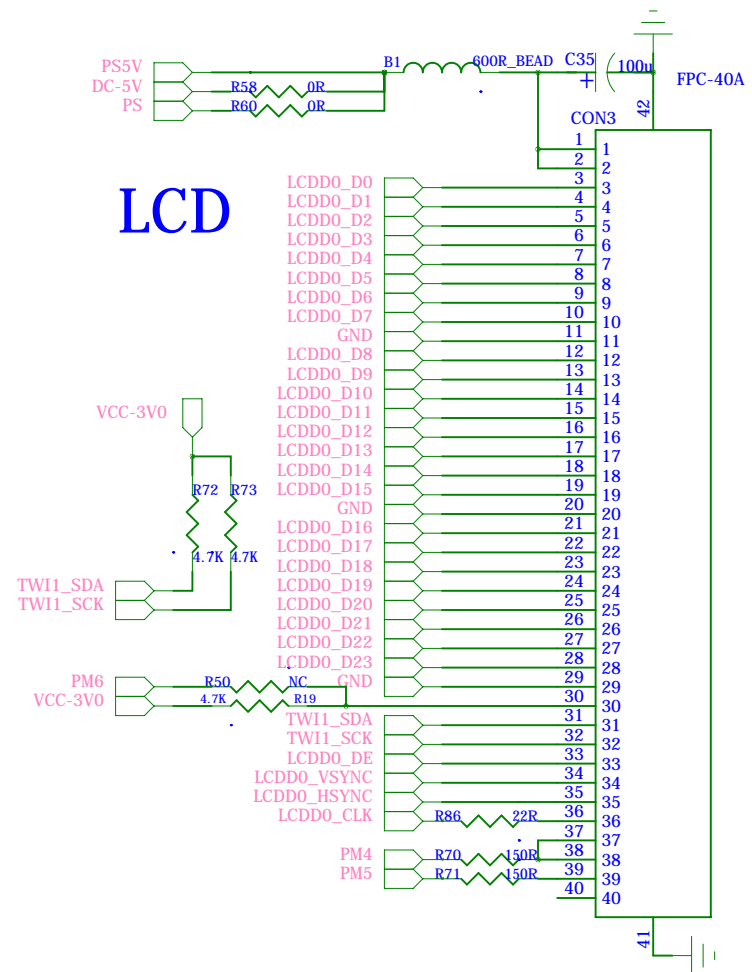
COMPANY: SINLINX

EMail: WWW.SINLINX.COM

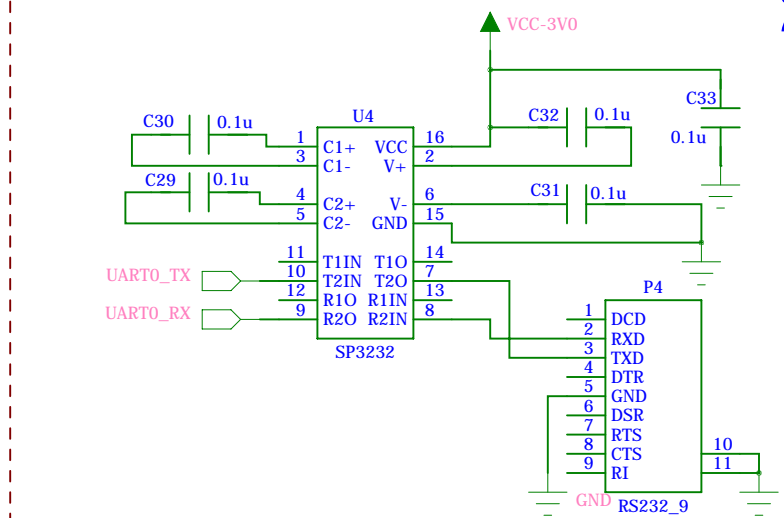
SDCARD



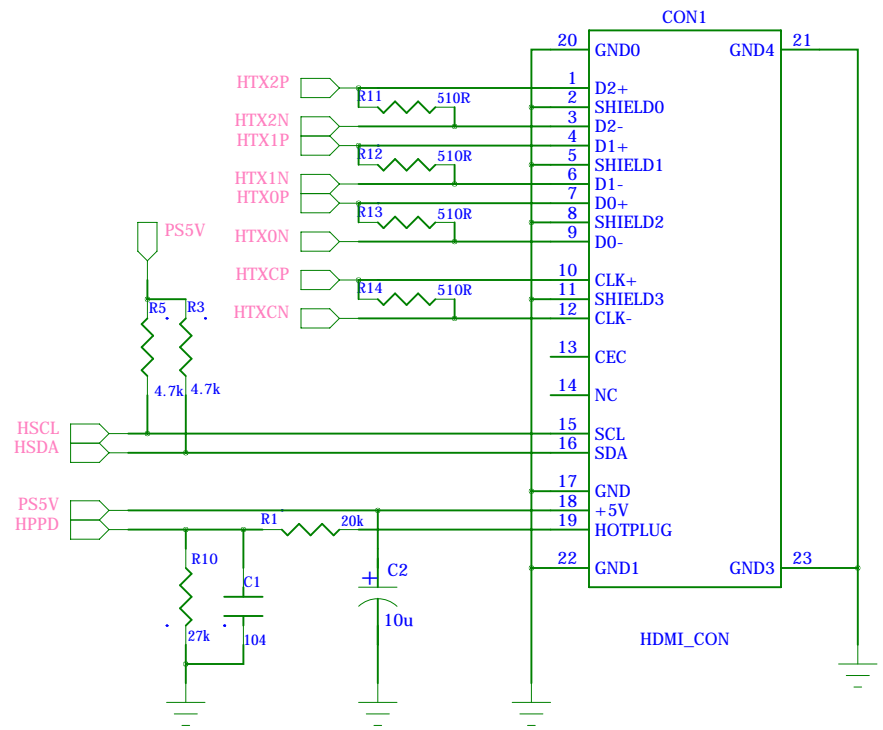
LCD



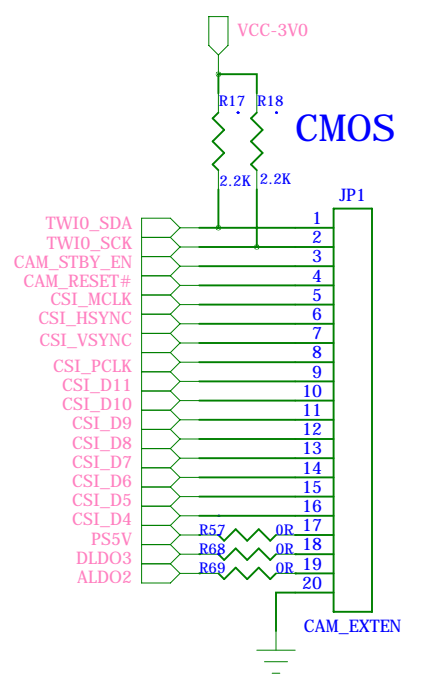
232



HDMI

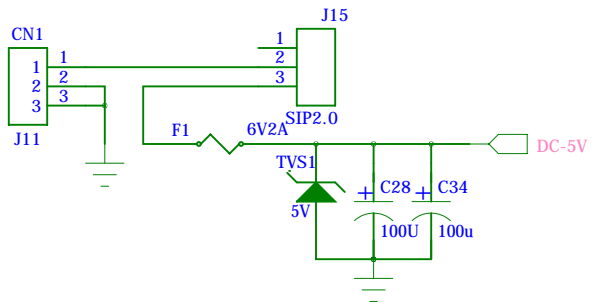


CMOS



POWER IN

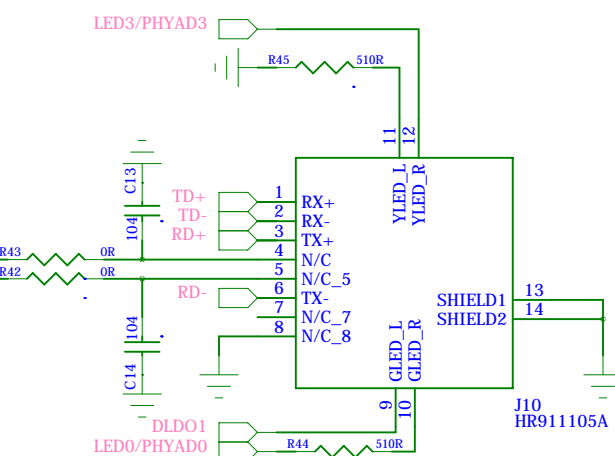
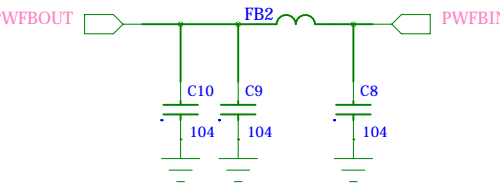
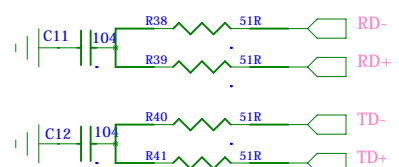
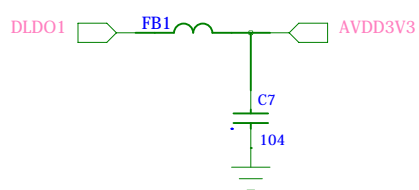
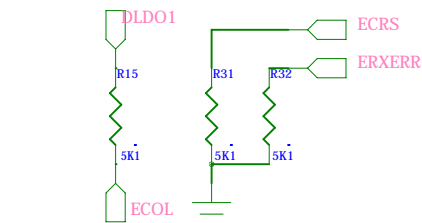
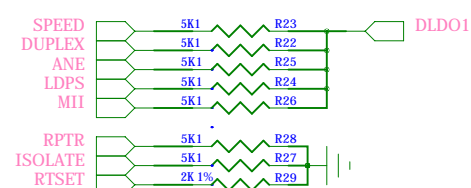
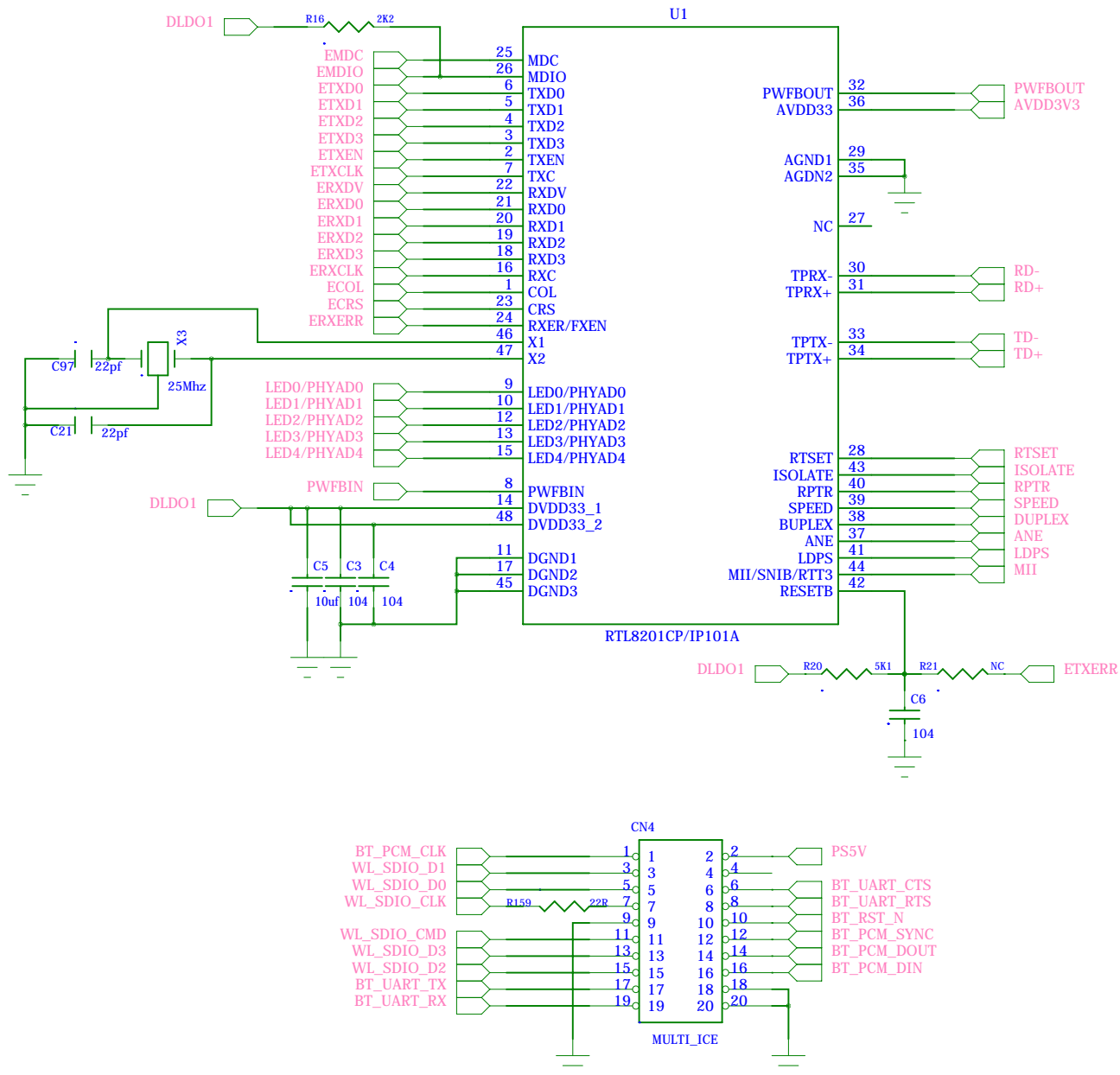
POWER



TITLE: SINA31SV1.3 BOTTOM Board

COMPANY: SINLINX

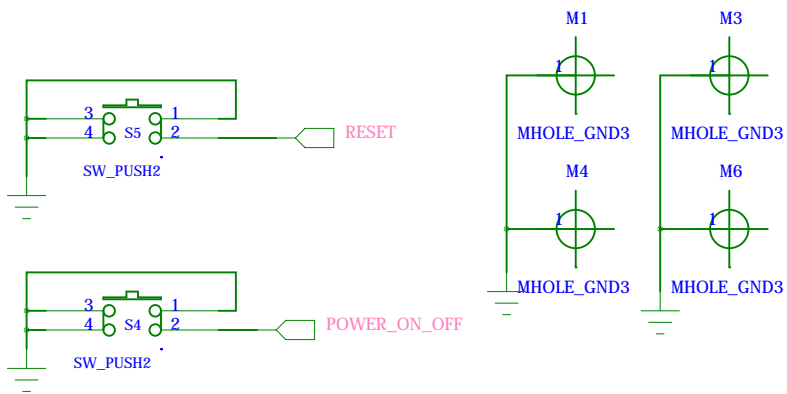
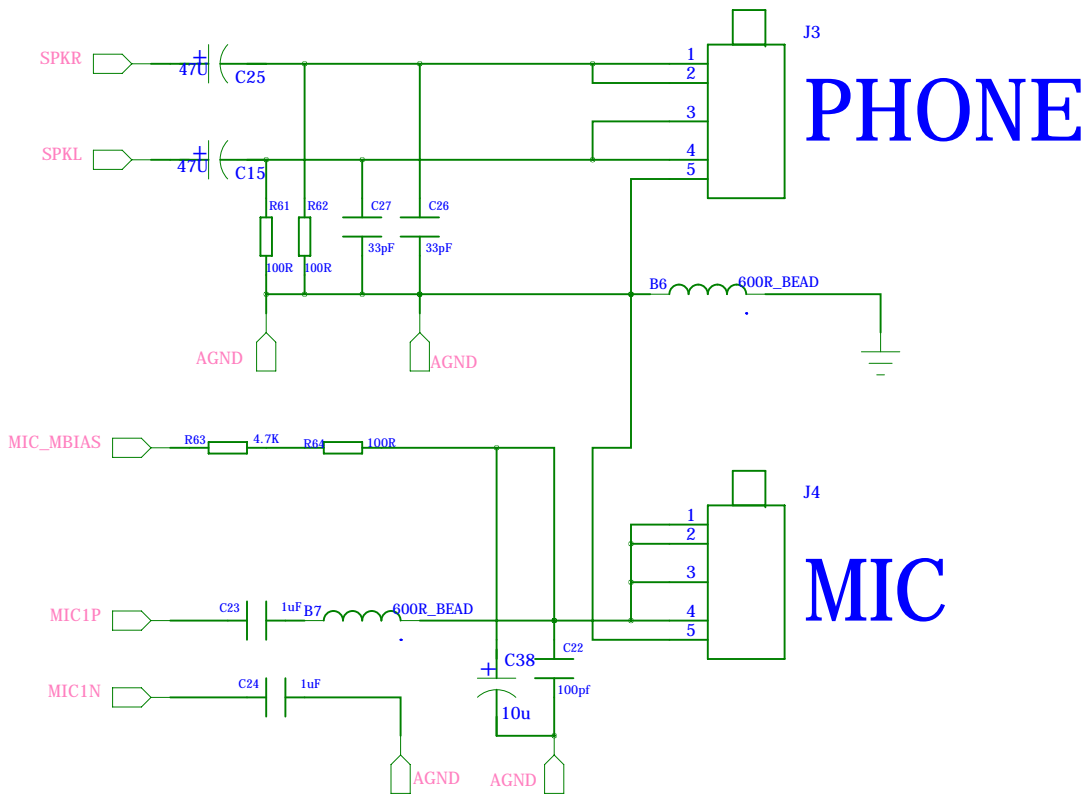
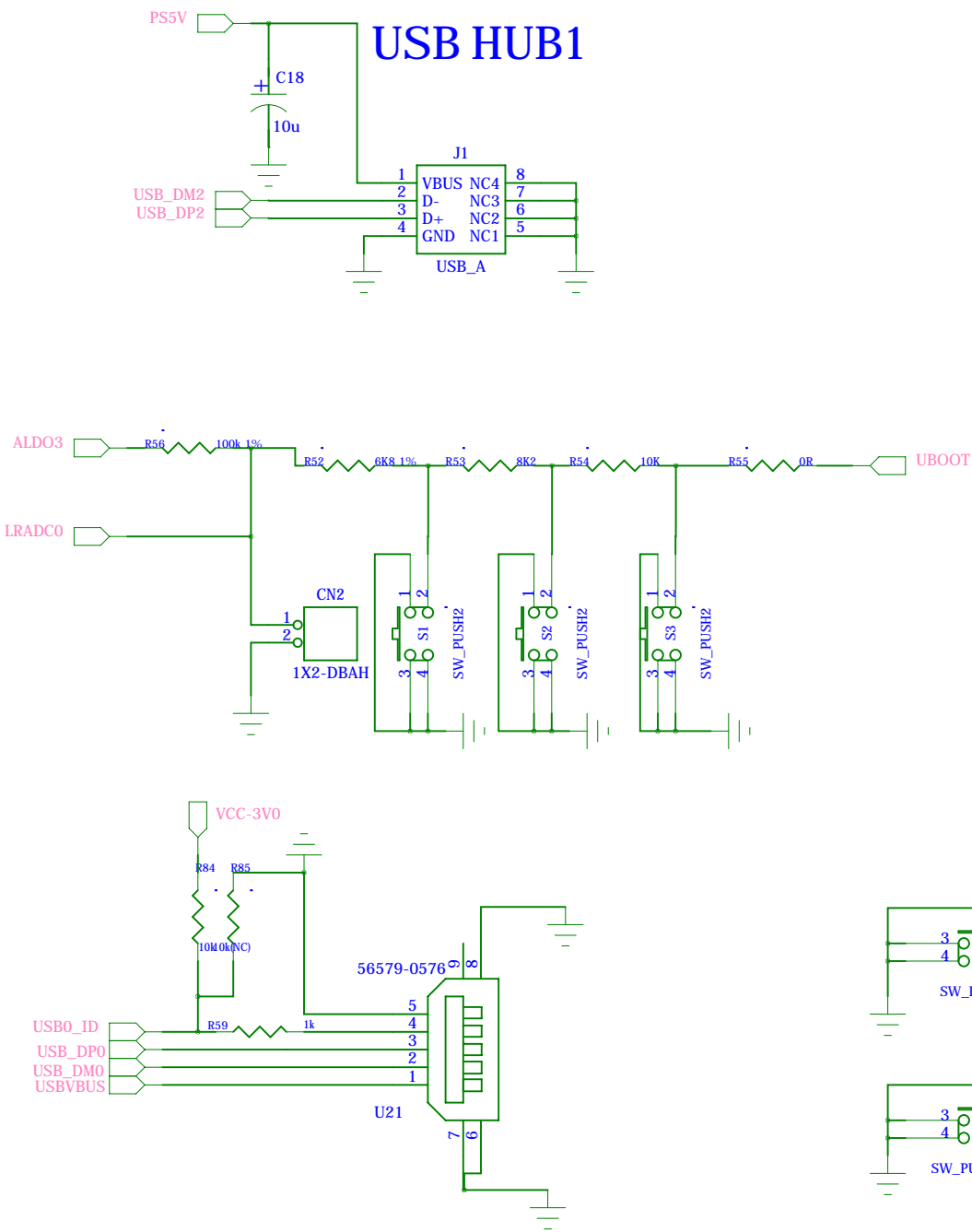
EMail: WWW.SINLINX.COM



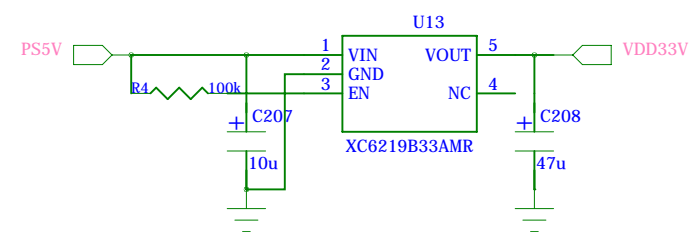
TITLE: SINA31SV1.3 BOTTOM Board

COMPANY: SINLINX

EMail: WWW.SINLINX.COM



TITLE:	SINA31SV1.3 BOTTOM Board
COMPANY:	SINLINX
EMaIL:	WWW.SINLINX.COM



TITLE:	SINA31SV1.3 BOTTOM Board
COMPANY:	SINLINX
EMAIL:	WWW.SINLINX.COM