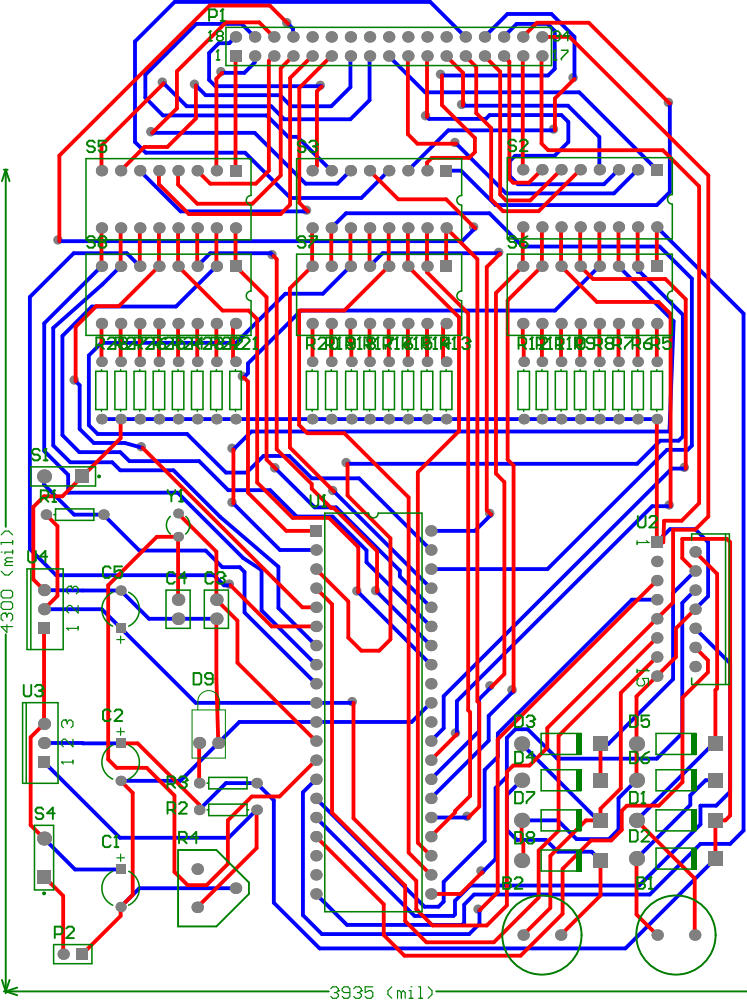


Title		
Size	Number	Revision
A4		
Date:	05/15/2013	Sheet of
File:	C:\Users\...\Sheet4.SchDoc	Drawn By:



Quantity	LibRef	Footprint	Designator	Description	Comment
2	Motor	RB5-10.5	B1, B2	Motor, General Kind	Motor
3	Cap Pol1	CAPPR5-5x5	C1, C2, C5	Polarized Capacitor (Radial)	Cap Pol1
2	Cap	VP32-3.2	C3, C4	Capacitor	Cap
8	Diode 1N4001	DO-41	D1, D2, D3, D4, D5, D6, D7, D8	1 Amp General Purpose Rectifier	Diode 1N5819
1	LED1	LED-1	D9	Typical RED GaAs LED	LED1
1	Header 17X2A	HDR2X17_CEN	P1	Header, 17-Pin, Dual row	Header 17X2A
1	Header 2	HDR1X2	P2	Header, 2-Pin	Header 2
27	Res1	AXIAL-0.3	R1, R2, R3, R5, R6, R7, R8, R9, R10, R11, R12, R13, R14, R15, R16, R17, R18, R19, R20, R21, R22, R23, R24, R25, R26, R27, R28	Resistor	Res1
1	RPot	pot	R4	Potentiometer	RPot
2	SW-PB	SPST-2	S1, S4	Switch	SW-PB
6	SW-DIP8	DIP-16-KEY	S2, S3, S5, S6, S7, S8	4009 Series DIP Switch, Raised actuator	SW-DIP8
1	ATmega32-16PI	40P6	U1	8-Bit AVR Microcontroller with 32K Bytes of In-System Programmable Flash Memory	ATmega32-16PI
1	L298N	Multiwatt15V	U2	Dual Full Bridge Driver	L298N
1	LM317T	T03B	U3	3-Terminal Adjustable Regulator	LM317T
1	L7805T	TO-220-AB	U4	Positive Voltage Regulator	L7805T
1	XTAL	R38	Y1	Crystal Oscillator	XTAL 16MHZ